



Good people of Epiphany,

The wise old philosopher Dr. Seuss once wrote, “Unless someone like you cares a whole awful lot, nothing is going to get better. It's not.” What you hold in your hand is just a little booklet, but it represents many, many people who care a whole awful lot.

This updated copy of our parish ministry booklet lists over one hundred ministries that are supported and carried out by the people of Epiphany. Often, even people who have been members of Epiphany parish for many years, are surprised when they realize how much we, as a parish family, are able to do and how many lives are being touched.

As you flip through the pages of this booklet you might feel the gentle nudge of God's Holy Spirit inviting you to become more involved in our parish life. It's always the case that when we respond to God's call in love then He will bless us. Our lives become more meaningful and we and others around us are changed – beautifully transformed.

Thanks be to God for the good work He does among us daily. Yet all we have seen so far is just a glimpse of what yet can be to come. May all of us believe that and deepen our commitment to manifest the love of Jesus – here at Epiphany and far beyond.

Let us work together in the hope that comes to us through Jesus,

Fr. Dennis Zehren, Pastor

This booklet is revised every three years. Please keep this copy for future reference.

Church of the Epiphany History

Mission Statement

We, the people of Epiphany Parish, have built a growing community on Coon Rapids farmland since our beginning in 1964.

We are a parish with educational priorities. We are a caring people who minister by reaching out to our sisters and brothers, responding to their spiritual and physical needs. We will manifest Christ through fostering spiritual growth and unity, and witnessing our faith.

On June 16, 1964, 200 families became the first parishioners of The Church of the Epiphany. Bishop Leo Binz appointed Father Bernard Reiser as the first pastor, and the first Mass was celebrated on June 17, 1964. Sunday liturgies for the first few years were celebrated in the Coon Rapids Senior High School auditorium. The first church buildings were dedicated in October of 1967 and included the church sanctuary, which is now the school gymnasium, 12 classrooms and a convent housing 20 sisters. The school was expanded in 1970, again in 1975, 1977, 1997 and 2002. The school educates about 520 students each year from kindergarten through eighth grade. Our Faith Formation classes provide instruction in the Catholic faith to about 900 students annually.

Community building events have been a part of Epiphany for many years. Our annual festival, now called Springfest, began in October of 1964. In 1967 we took over a dining hall at the Minnesota State Fair. Epiphany has been serving great meals, building community, and reaching out to everyone at the fair every year since, except in 1990 when the diner caught fire and burned to the ground.

The present church building was built in 1984 and is attached by a foyer to the school. In 1994 the Epiphany Pines, 107 senior apartments, was completed, providing independent living for seniors with easy indoor access to our church and other facilities through a connecting link. In 2001, the Epiphany Assisted Living was completed. The Assisted Living building contains assisted living and memory care apartments. The Epiphany complex

includes a cemetery, established in 1972, a perpetual adoration chapel, and a religious gift shop. The Fatima Shrine was dedicated in 2000 and includes Stations of the Cross, Rosary Beads and statues of Our Lady of Fatima surrounded by beautiful gardens for prayerful meditation and reflection. In 2003, Epiphany commissioned Sr. Clairvaux McFarland, OSF, to write an icon of the Epiphany. The icon is now located in the Icon Chapel in the main church.

In March of 2001, Father Reiser retired as the pastor of Epiphany Church after 37 years. That July, Father Patrick Kennedy became the second pastor of Epiphany. In July 2005, Father Kennedy was named pastor of Pax Christi Church Community and Father Dennis Zehren, associate pastor, became pastor of Epiphany. He continues as pastor today.

Epiphany Parish has grown from a parish of 200 families to approximately 5,000 families. Each year we baptize approximately 175 babies, celebrate over 30 weddings, have over 200 First Communions, more than 150 Confirmations and about 100 funerals.

May we continue to thank God for the many blessings He has bestowed on the Epiphany community over these years and may we always continue to manifest Christ in everything we do as a parish.

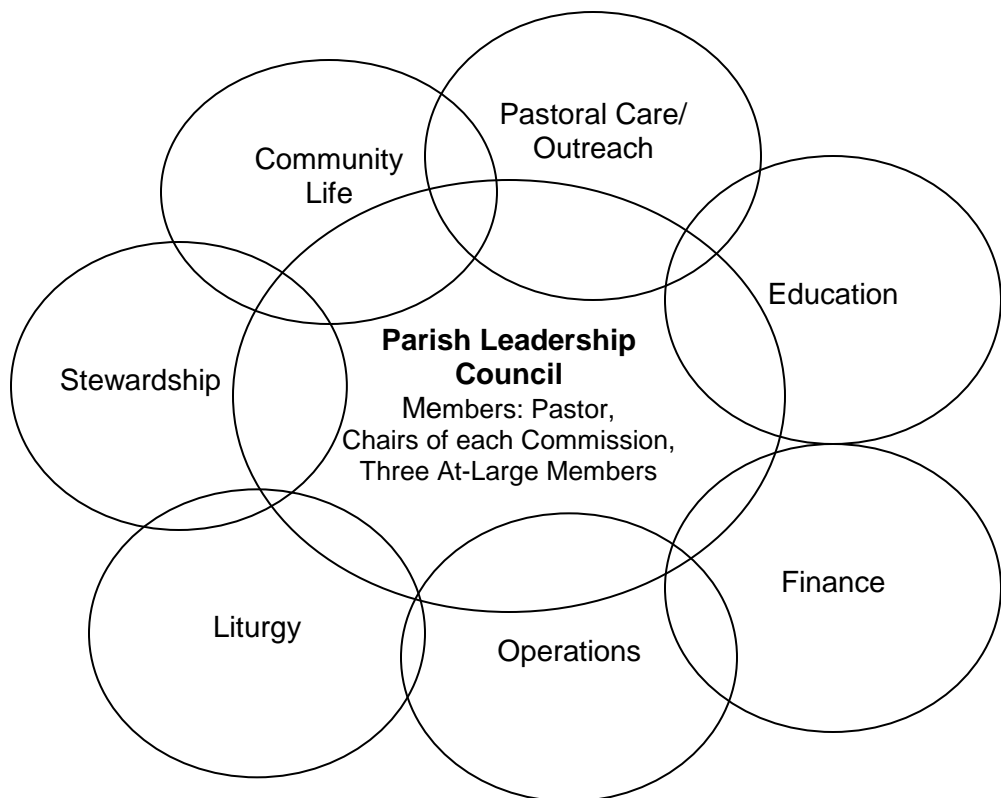
Stewardship: A Way of Life

The basic principle of stewardship is that everything we have: our life, our talents, our skills, our family - all is a gift from a loving God. What we possess is not really ours. We are God's stewards and caretakers of all that we have received. If we truly believe that God gives us all that we have, gratitude is our response. When we realize that God has provided for us and will continue to do so, we recognize that our real security lies in God. If we trust, God who has given us all, will take care of our future.

“Beginning in conversion, change of mind and heart, this commitment is expressed not in a single action, nor even in a number of actions over a period of time, but in an entire way of life. It means committing one’s very self to God. Jesus’ call is urgent. He does not tell people to follow him at some time in the future but here and now – at this moment, in these circumstances. There can be no delay.”

~Stewardship: A Disciples' Response

Parish Leadership Council



Together with the pastor, the Parish Council is both the steward of the parish mission and the motivator and instigator of change, discerning where God is leading the community and faithfully following that direction. The Parish Council consists of three at large members, seven commission chairs and the pastor. The two trustees and the administrator are ex-officio members. The seven commissions are Community Life, Pastoral Care/Outreach, Education, Finance, Liturgy, Operations and Stewardship. Please consult the parish website for meeting dates and times.

Alphabetical Listing by Organization

Adult Bible Studies.....	11
Altar Servers.....	20
Baptism Preparation Program.....	12
Birthright.....	31
Boy Scouts.....	25
Building and Grounds Maintenance.....	9
Business Knowledge Network.....	25
Cana Dinner Planning Committee.....	18
Celebration Ringers.....	21
Chapel Cleaning.....	9
Charismatic Prayer Group.....	24
Children’s Liturgy of the Word.....	20
Church Cleaning.....	9
Communion Ministry to Homebound.....	31
Confirmation.....	12
Couples Volleyball.....	25
Cub Scouts.....	26
Dinner Theatre.....	22
Divorced and Separated Support Group.....	31
Easter Cantata.....	22
Elementary Faith Formation.....	13
Environment.....	20
Epiphany Assisted Living.....	31
Epiphany Caring for Life.....	31
Epiphany Catholic Home School (ECHO).....	26
Epiphany Catholic School.....	16
Epiphany Extended Day Program.....	17
Epiphany Extra.....	9
Epiphany Pines.....	32
Epiphany Prayer Network.....	24
Epiphany Quilt Club.....	26
Epiphany Reiser Foundation.....	26
Epiphany School Readiness Preschool Program.....	17
Epiphany...We Care.....	32
Eucharistic Ministers.....	20
Faith Community Nurse Program.....	32
Faith Formation Parent Advisory Committee.....	13
Fall Bazaar Helper.....	18

Family Promise.....	32
Family Table.....	33
First Reconciliation and First Eucharist Program.....	13
Fish Fry.....	18
Food Shelf.....	33
Funeral Food Ministry.....	33
Funeral Luncheon Server.....	33
Gala Celebration.....	18
Gathering Space Information Desk.....	9
Gift Center.....	10
Girl Scouts.....	27
Heaven Sent.....	22
High School Worship Band.....	22
Holiday Basket Program.....	33
Hospitality Shift Leader.....	18
Instrumentalists/Cantors.....	22
Knights of Columbus.....	27
Knights of Columbus Ladies Auxiliary.....	27
Lectors.....	21
Legion of Mary.....	24
Lending Library.....	11
Life Teen Worship Band.....	23
Light Weigh.....	27
Little Flowers.....	28
Marriage Mentors.....	11
Meals on Wheels.....	34
Men’s Prayer Group.....	24
Middle School Youth Ministry and Faith Formation.....	14
Natural Family Planning Educators.....	12
New Parishioner Welcoming Team and Mentors.....	34
North Metro Grief Coalition.....	34
North Metro Job Networking Group.....	28
Nursing Home Mass Helper.....	35
Parish Bulletin.....	10
Parish Choir.....	23
Parish Mailings.....	19
Perpetual Eucharistic Adoration.....	24
Prayer Shawl Ministry.....	35
Red Cross Blood Drive.....	28
Resurrection Schola.....	23

Rite of Christian Initiation for Adults.....	14
Rite of Christian Initiation for Children.....	14
Rosary Leaders.....	25
Sacristans.....	21
St. Cecilia’s Choir.....	23
Senior High Youth Ministry and Faith Formation.....	15
Shakespeare and the Bible.....	28
Single Adults in Fellowship.....	29
Sobriety Sisters AA.....	29
Soundboard Operators.....	10
Springfest.....	19
State Fair Diner.....	19
Street People Ministry.....	35
Sunday Nursery.....	10
Sunday School Program.....	15
Unemployment Support Group.....	29
Usher Ministry.....	21
Vacation Bible School.....	15
Vigil Light Cleaners.....	11
Vocation Committee.....	12
Women of Epiphany.....	29
Youth Choir.....	23

Risk Management

All adult volunteers in the St. Paul & Minneapolis Archdiocese who regularly work or have contact with minor and vulnerable adults in a supervisory, leadership, chaperoning, care-giving, teaching or similar relationship need to have a background check and Virtus training. These are also required of leaders of the State Fair Diner, Marathon and Springfest. Please visit the website, www.virtus.org, to register and view upcoming sessions. If you are not sure if you fall under these categories, please call 763.862.4347.

CHURCH OPERATIONS

Building and Grounds Maintenance

Epiphany is looking for stewards to help in the maintenance of the buildings and grounds. Some of the projects would include cleaning of the buildings and general repair of the buildings. Also, stewards are needed to help with the grounds. Such projects would include weeding flower beds and raking leaves. All stewards must be 16 years of age and have the time to complete all projects that they are assigned.

Chapel Cleaning

The chapel is cleaned every week on Sunday during the 12:15 p.m. Mass. Teenagers and adults are welcome to participate. Training is provided and the time commitment is approximately four to five times a year.

Church Cleaning

The church is cleaned on Monday mornings and/or Tuesday evenings. Teenagers and adults are needed to help with the cleaning. Based on current rotation each team cleans about five times a year.

Epiphany Extra

The mission of *The Epiphany Extra* newsletter is to provide a vehicle to bond parishioners and support the mission of Epiphany by providing common information. The newsletter is published every two months and is mailed to every registered household. It is also posted on the Epiphany website.

Gathering Space Information Desk

The church gathering space is an area where visitors and parishioners often enter seeking information about our parish and programs. This ministry provides the opportunity to welcome the many who pass through Epiphany's doors. Scripture invites us to "Welcome one another as Christ has welcomed you." (Romans 15:7). Many volunteers are needed to help staff this information and welcoming desk. Training is provided.

Gift Center

The Epiphany Gift Center makes available books, Bibles, music and gifts for our parishioners to purchase below suggested retail. All of the profits are contributed to the parish. Any adults and confirmation students are welcome to work at the gift center and training is provided. The gift center is open during Masses on weekends and a couple of hours each day during the week. The time commitment of stewards working the register and selling the merchandise is two hours a month.

Parish Bulletin

Epiphany publishes a bulletin three times a month, September through May, and every other week in June, July and August. The bulletin is mailed to all registered households on the first week of each month and other weekly bulletins are handed out after weekend Masses. The bulletin is also posted on the Epiphany website.

Soundboard Operators

Reliable volunteers, 18 years or older, with some experience with sound equipment, prepare and operate the main church's sound system for each weekend Mass. This involves setting up, testing and troubleshooting microphones, verifying the operation of the over-all sound system and live mixing of sound during the Mass. Occasional PowerPoint projection onto the screens is involved. Training is provided. The time commitment is typically one Mass per week (or at least once per month), arriving early and staying late. All operators must keep current with all music groups.

Sunday Nursery

The nursery provides a safe and nurturing childcare program for children who are walking up to age three during the 8:45 a.m. and 10:30 a.m. Sunday Masses. The nursery is open from Labor Day to Memorial Day, excluding major holiday weekends. Every family that uses the nursery, along with adult and youth volunteers, will be put on a rotating schedule to work in the nursery once every six to eight weeks. Registration is required.

Vigil Light Cleaners

Vigil Light Cleaners are responsible for cleaning the vigil light stand and refilling votive candle holders in the icon chapel and near the statues of Mary and the Sacred Heart in church. Training is provided. Time commitment is approximately twenty minutes about every six to eight weeks depending on the number of volunteers for each day of the week.

EDUCATION

Adult Enrichment

Adult Bible Studies

Each fall Epiphany has been offering the Jeff Cavin's Bible study series *The Great Adventure*. These are once a week groups meeting at the church lasting from 10 weeks to 24 weeks from 7:00 p.m. - 9:00 p.m. They consist of one hour of small group sharing and one hour of video presentation featuring Jeff Cavins. Adults are needed for preparation beginning in July of each year and for facilitating small groups during the Bible studies. Training is provided.

Lending Library

The Epiphany Lending Library is a ministry formed to help evangelize Christian faith through media channels, influence spiritual and moral growth and provide knowledge of our Catholic faith. People of all ages are needed to help in the lending library. The library is open after weekday and weekend Masses. The time commitment is one half hour to four hours a month. Occasionally, there is a need for evening work on an on call basis.

Marriage Mentors

Marriage Mentor couples assist engaged couples in preparing for the sacrament of marriage. The mentor couples must be married at least three years. Training is provided. Meetings with the engaged couple take place in the home of the mentoring couple.

Natural Family Planning Educators

Natural Family Planning is a healthy, loving way for married couples to plan pregnancy. It is 99% effective in avoiding pregnancy and can offer enormous assistance to couples struggling with infertility. Unlike artificial contraception, the Catholic Church endorses it as a morally acceptable means of family planning. Classes are periodically taught at Epiphany, and stewards are needed to teach classes. Training is provided.

Vocation Committee

The Vocation Committee sponsors programs to encourage men and women of Epiphany to serve the Catholic Church as priests, brothers or sisters. Also, funds are raised to help support their formation. Stewards are needed to serve on the committee. The group meets approximately eight times a year at Epiphany.

FAITH FORMATION

Baptism Preparation Program

Parents who have an infant or a child under the age of seven who has not been baptized are asked to prepare themselves for this sacrament by participating in the Baptism Preparation Program of the parish. Parents are asked to attend either before or after the child's birth. Meetings are held at Epiphany in the hearth room the first Saturday of the month 10:30 a.m. - 12:00 p.m. After attending the class, scheduling for the baptism can occur. Baptisms take place each Sunday immediately following the 12:15 p.m. Mass. Parents who have attended the session within the past three years do not need to attend the session.

Confirmation

The Confirmation program is the sacramental process to prepare youth for the Sacrament of Confirmation. Candidates are in tenth grade or higher and enrolled in the regular Faith Formation Program, a formal Home School Program or their Catholic High School Religion Program. In addition, there are candidate/sponsor/parent evenings, a retreat weekend and other responsibilities. The sacrament of Confirmation takes place in the spring.

Elementary Faith Formation

Through the Elementary Faith Formation program, children in first through fifth grade are nurtured through a comprehensive and systematic presentation of the Catholic faith. Classes are held on Wednesday evenings from late September through late April. Share your gifts in any of the following ways: catechists, classroom assistants, clerical/office helpers, nursery attendants and assistants, hall monitors, prayer leaders and music leaders. Training is provided.

Faith Formation Parent Advisory Committee

This is an advisory and visioning group for the Director of Faith Formation. The faith formation programs encompass servicing our children through adulthood including sacramental preparations and celebrations. The programs also coordinate RCIA, adult enrichment, Vacation Bible School and youth ministry for teens in middle and high school. The committee meets monthly, except December, from September through May and members are appointed by the pastor.

First Reconciliation and First Eucharist Program

The First Reconciliation and First Eucharist program provides support for parents who are preparing their second grade child to receive the sacraments of First Reconciliation and First Eucharist. The program is offered in conjunction with the Faith Formation classes, school religion classes and learning centers. It includes parent/child meetings and retreats. Adults and teenagers are needed to assist with office help, greet participants and organize the parent/child learning centers.

“No one shall appear before the Lord empty-handed, but each of you with as much as he can give, in proportion to the blessings which the Lord, God has bestowed on you.”

~ Deuteronomy 16:10, 16-17

Middle School Youth Ministry and Faith Formation

The Middle School Youth Ministry and Faith Formation programs help our sixth through eighth grade youth encounter Christ and develop their relationship with Him while learning more about their Catholic faith. Adult leaders are needed on Sunday or Wednesday evenings to assist in the weekly program. The time commitment is about two hours a week. The initial weekend training is in early September. Occasionally additional adult chaperones are needed for one-time events. Help is also needed from the Summer Stretch program which takes place on Thursdays during the summer.

Rite of Christian Initiation for Adults (RCIA)

RCIA is the process by which adult men and women are initiated and welcomed into the Catholic faith through the sacraments of Baptism, Eucharist, and/or Confirmation. This process includes instruction, scripture reflection, faith sharing, prayer, liturgical rites and community building times. Any adult wishing to be baptized, receive their First Eucharist, and/or be Confirmed is welcome to consider this program. Parishioners are needed to fill the roles of sponsors and team members. The meetings are held on Wednesday evenings September through April 6:45 p.m. - 8:15 p.m. On-going training is provided.

Rite of Christian Initiation for Children

This parish program is for youth older than second grade who have not been baptized, received First Reconciliation and/or First Eucharist. The program meets on Wednesday evenings, 6:45 p.m. – 8:00 p.m. from late September through spring. Training is provided for catechists/teachers.

Senior High Youth Ministry and Faith Formation

Senior High Youth Ministry and Faith Formation helps our ninth through twelfth grade youth to encounter Christ and develop their relationship with Him while learning more about their faith. Stewards are needed on Sunday or Wednesday evenings to assist in the weekly program. Leaders must be out of high school three years or more. The time commitment is two to six hours a week. Training is provided. Occasionally, additional adult chaperones are needed for one-time events.

Sunday School Program

Epiphany's Sunday School/Early Childhood Education program provides religious education for three year olds through first graders on Sunday mornings during the 8:45 a.m. and 10:30 a.m. Masses from September through May. Stewards 13 years or older are needed to volunteer in the program. Training is provided.

Vacation Bible School

Vacation Bible School is a children's faith formation ministry, which strives to bring God's presence, love, and word to children of all ages in an exciting and fun atmosphere. This is a weeklong summer program that requires a large number of stewards. Each individual's time commitment can vary according to one's availability. Adults and youth at least 12 years of age are needed to plan and assist with Vacation Bible School as group leaders, music leaders, clerical support, first aiders, kitchen workers, artists and class helpers. Training is provided.

"Just so, your light must shine before others that they may see your good deeds and glorify your heavenly Father."

~ Matthew 5:13-16

EPIPHANY CATHOLIC SCHOOL

Epiphany Catholic School

The Epiphany parish community sponsors Epiphany Catholic School. We strive to assist all school parents in providing for the spiritual and educational growth of their children. Adult stewards are needed to help in the classrooms, lunchroom, media center, athletics, office and playground during the school year. Training is provided. Parents of students are encouraged to get involved in the various activities and events of the school. More information is available on the school website at www.epiphanyschoolmn.org

Parent Advisory Committee

The School Advisory Committee advises the principal in actualizing the school's mission which is: Epiphany Catholic School, an integral part of Epiphany Parish, is a Christ-centered faith community. Dedicated to the formation of the whole person, we are committed to providing all students with the highest quality Catholic education. We are preparing students to "Manifest Christ of All." Time commitment is three to five hours monthly and the pastor appoints members.

Parent Teacher Organization (PTO)

The PTO partners with parents, guardians and staff members in sponsoring school events and providing opportunities for students, parents and guardians to share their time, talent and treasure to support teachers and staff with the education of their children. Some events include the Fish Frys, family socials, making dinners for the staff during conferences, and sponsoring the Trash to Treasure Program. The time commitment varies.

Marathon Committee

For over 30 years Epiphany School has joined hundreds of schools statewide to participate in the Minnesota Marathon for Nonpublic Education. The purpose of the marathon is to raise needed funds for the school and foster awareness of the contributions of non-public schools in our community. The marathon is the biggest fundraiser of the school year and the committee meets over the summer to plan for the events during the fall that include a walk and service projects, pep fests, flyers, etc. The time commitment varies.

Epiphany Extended Day Program

The Extended Day Program provides educational and recreational experiences year-round during out-of-school time for kindergarten through sixth grade students. Students may attend on a full-week or part-week basis. Our hours on school days are 2:15 p.m. – 6:00 p.m. and school release days 6:00 a.m. – 6:00 p.m. Program teachers design stimulating hands-on curriculum to provide fun and meaningful activities that enrich and complement school day experiences. Students are challenged and encouraged to explore new choices and discover new skills. It is the goal of the Extended Day Program to promote the development of life skills while having fun.

Epiphany School Readiness Preschool Program

The School Readiness Preschool Program provides four-hour sessions for three, four and five year olds on a Monday/Wednesday/Friday or Tuesday/Thursday basis. All program curriculum is based on Catholic teachings and offers a wide range of activities and skills. Bible stories and lessons are carefully selected to enhance weekly and monthly themes. Meaningful activities are designed to stimulate academic, social-emotional and spiritual development. The goal of the School Readiness Preschool Program is to provide a foundation for future education and an enthusiastic desire to learn.

EVENT PLANNING

Cana Dinner Planning Committee

The Cana Dinner celebration is an annual event in February at Epiphany that celebrates married couples with a para liturgy, dinner, social and speaker. The committee of married couples meets several times during the year. They plan the event, sell tickets after Masses and host the event which is held at the church.

Fall Bazaar Helper

The first weekend of November, Epiphany hosts an annual craft bazaar. Areas that require help includes the kitchen, bake sale, kid's corner, lefsa booth and raffle table.

Fish Fry

The Epiphany Lenten Fish Fry is a wonderful opportunity to serve the parish and community, have fun and meet new people - all at the same time. Every Friday of Lent (except Good Friday) a delicious hot Lenten meal is served. To do this, many hands are needed each week with several different shifts and jobs available. This event helps Epiphany school's Parent Teacher Organization by supporting projects and events that encompass Epiphany School, parish and the surrounding community.

Gala Celebration

The Annual Gala Celebration is a community-building, social event. The function includes dinner, entertainment, a silent auction, a live auction and other activities. The theme will change from year to year as determined by the committee. Opportunities in this ministry include but are not limited to the steering committee, the auctions, entertainment and promotions. The committee will meet several times during the year to plan the event.

Hospitality Shift Leader

Shift leaders work once every eight weeks for a two-hour shift. They are responsible for the coordination of the after Mass hospitality service. Training is provided.

Parish Mailings

Volunteers provide parish office support by assembling periodic mailings from Epiphany. This includes folding, collating, stuffing envelopes and preparing for postage. The parish bulletin crew gathers the last Tuesday of each month to prepare the bulletin for mailing. Other parish mailings take place periodically during the work week and day time hours.

Springfest

Springfest, Epiphany's annual three-day celebration, is held on the weekend prior to Memorial Day in May. Chairs and co-chairs over the age of 18 are needed to help coordinate a wide variety of areas. The time commitment varies depending upon the area. Also, throughout Springfest weekend about 1,000 stewards are needed to work shifts that are approximately four hours in length. The age requirement varies for each activity. Please note: Shift sign-up occurs after Masses the three weekends prior to Springfest.

State Fair Diner

The Epiphany Diner is open daily during the annual Minnesota State Fair, late August through Labor Day. The diner provides a wonderful opportunity for community with other parishioners and promotes Epiphany within the state. Over 1,500 stewards are used during the diner each year. Anyone sixth grade or older is welcome to participate. Please note: Shift sign-up occurs after Masses in August.

*“And keep in mind the words of the Lord Jesus who himself said,
“It is more blessed to give than to receive.”*

~ Acts 20:35

LITURGY, MUSIC, and PRAYER

Liturgical Ministries

Altar Servers

Altar servers assist the priest during the Mass. Fifth graders or anyone over ten years of age may apply for this ministry. Adults are needed to help with training, scheduling reminders and other events connected with this ministry.

Children's Liturgy of the Word

The Children's Liturgy of the Word is a celebration of God's Word for young children ages six to nine during Sunday 8:45 a.m. and 10:30 a.m. Masses. Children are invited to an alternative space to reflect on God's Word. Leaders must be at least 18 years of age or older and the time commitment is an hour each time. The rotation varies according to the number of leaders.

Environment

The Environment Committee's mission is to create a welcoming environment that announces the liturgical season and draws the community into the celebration of the Liturgy. As a committee we are responsible for decorating the church, sanctuary and gathering space throughout the liturgical year. Members are needed to plan, set-up and maintain the environment throughout the year. Time commitment can range from thirty minutes to eight hours per month.

Eucharistic Ministers

Eucharistic ministers distribute the Body and Blood of Christ at all weekend Masses and on Holy Days of Obligation. The Eucharistic minister chooses a specific Mass time and serves on a five-week rotation. Training is provided. Attendance at one annual meeting is required.

Lectors

Lectors proclaim the Word of God and the Prayer of the Faithful during all weekend and Holy Day Masses. We are assigned on a five-week rotation. We proclaim at different Mass times within our schedule, as part of a two person team. Ongoing training and support is provided during monthly lector workshops. The workshops are used to help us grow in the spirituality and rituals of our calling.

Sacristans

The Office of Sacristan is a ministry of the Church by which a sacristan uses his/her time and talent to serve the priest before and after one of the daily or weekend Masses. The sacristan performs all preparations for the Mass by working with the altar servers, lectors, ushers, Eucharistic ministers and by performing the duties within the sacristy. The sacristan should arrive one half hour before Mass and plan to stay a short time after Mass. The age requirement for a sacristan is 16 years old and confirmed. Training is provided and the rotation is once a week.

Usher Ministry

Ushers are greeters of hospitality who meet and greet people as they enter for Mass or worship. The ushers also gather the Sunday offerings collections and hand out parish bulletins. Ushers are required to wear proper attire. Participants must be confirmed and training is provided.

Music Ministries

Celebration Ringers

Celebration Ringers, Epiphany's handbell choir, provides special music as well as accompaniment for vocal ensembles at liturgies throughout the year. Members do not need to have experience playing bells, but should be able to read music. Rehearsals are Tuesdays at 7:00 p.m.

Dinner Theatre

Come and share your Broadway talent in the *Epiphany Goes Broadway* show. This is a chance to shine on the stage or work behind the scenes in our annual musical theatre production. Auditions are open to all performers ages nine to adult. Rehearsals begin late August.

Easter Cantata

The Easter Cantata is an opportunity to be involved in music ministry with singers and instrumentalists from other Catholic parishes in the area. You do not have to be a member of Epiphany's music ministry to be in the Easter Cantata. Rehearsals for singers begin at the end of January and run through Palm Sunday 8:15 p.m. - 9:15 p.m. Performances will be the Friday before Palm Sunday and Palm Sunday evening with a full orchestra.

Heaven Sent

Heaven Sent is a contemporary music group that provides uplifting worship using a blend of musical styles to lead the congregation in song and praise. The group is scheduled at the 5:30 p.m. Mass on the first and third Saturdays of the month. Rehearsals are Thursdays at 7:15 p.m. Instrumentalists and vocalists are welcome.

High School Worship Band

A group open to high school vocalists and instrumentalists that want to lead energetic and spirited music at worship once a month.

Instrumentalists/Cantors

Members of Epiphany parish are always invited to offer their musical gifts. Instrumentalists are encouraged to provide special music or accompany a vocal ensemble. Cantors are needed to lead congregational singing throughout the year, especially during the summer.

Life Teen Worship Band

The Life Teen musicians lead the congregation in worship at the Sunday 5:30 p.m. Mass and participate in various youth events throughout the year. The band plays all styles of worship music with the sole intent of lifting up the name of Jesus Christ and bringing people, especially the youth of our parish, closer to Him. Participants must be adults and have been out of the youth program one full year, and complete a simple interview and audition process. The group meets Thursday evenings for rehearsal.

Parish Choir

The Parish Choir leads worship with a variety of music styles and provides special music at the Sunday 10:30 a.m. Mass from September through May. The choir also leads special liturgies throughout the year, including Christmas and Triduum. All singers age 15 and older are welcome. Reading music is not required. Rehearsals are Wednesday evenings from 7:00 p.m. - 8:30 p.m. The choir meets on Sunday mornings at 9:45 a.m. to warm-up for Mass.

Resurrection Schola

The Resurrection Schola is the choir that sings for funeral liturgies at Epiphany. This ministry offers musical and liturgical hospitality to those grieving their loss. There is no age requirement. Members are called as funerals occur and meet one half-hour prior to the funeral. Members are invited to sing as their schedules allow.

St. Cecilia Choir

The St. Cecilia Choir is open to youth sixth grade through twelfth grade. They lead the congregation in worship and offer special music at the 12:15 p.m. Mass September through May. Reading music is not required. Rehearsals are Tuesdays at 6:00 p.m.

Youth Choir

Open to fourth to sixth grade youth, this choir leads worship once a month at the 8:45 a.m. Mass. Second and third graders are welcome to join the choir for Christmas and Easter liturgies.

Prayer Ministries

Charismatic Prayer Group

The Charismatic Prayer Group are adults who gather to sing praise to God, listen to Him, share scripture, learn about God and His Church, and pray together. The group meets every Tuesday evening at 7:00 p.m.

Epiphany Prayer Network

The Epiphany Prayer Network is a volunteer prayer line based on requests. Prayer requests are emailed to members and a list is also located in the chapel so others may also pray. If you have a prayer request, you can send it to khowland@epiphanymn.org. All are welcome to be a part of this important prayer ministry.

Legion of Mary

The Legion of Mary is a worldwide organization of Catholic men and women who offer their services to the priest performing spiritual works and any type of social services and Catholic action. Members perform any apostolic work that is needed. The work is done under the direction of the spiritual director.

Men's Prayer Group

The purpose of Men of Epiphany is to equip and encourage men for more effective service within their families. Participants in this group must be adult males. The time commitment is one and a half hour every week. The group meets in the hearth room at 6:30 a.m. on Saturdays. For more information, or to see our weekly study, visit us on the web at www.MenofEpiphany.org.

Perpetual Eucharistic Adoration

Adoration is a quiet time spent in prayer before Jesus present in the Eucharist. Parishioners are invited to sign up for one hour each week, and a substitute program is available when the scheduled weekly commitment cannot be met. The chapel is open throughout the day and night and visitors of all ages are always welcome.

Rosary Leaders

Rosary Leaders lead the rosary one half hour before Masses on Saturday and Sunday. Participants may select the time they would like to lead. Substitutes are also needed. Children are welcome. Training is provided, and the time commitment is approximately once per month.

ORGANIZATIONS

Boy Scouts

Boy Scout Troop 524 is open to 11-17 year old boys. The troop is a boy-led organization with adult leaders who assist. Boy Scouting will teach young men to be the masters of their own destiny. It gives them the self-respect and the confidence to make their own decisions and become young men of integrity. The troop meets on Monday evenings in the school cafeteria.

Business Knowledge Network

The Business Knowledge Network meets monthly to share knowledge, experience, and best practices. Small business owners or managers are welcome to attend. Each meeting will be focused around a theme focusing on owning, running or managing a business in our community. Unlike other business network groups there are no membership fees or dues required, so attendees are asked to donate their time and talent back to Epiphany. Members are encouraged to add their input on the topics that relate to their areas of expertise.

Couples Volleyball

Couples interested in having a little exercise and fun while playing the game of volleyball compose this group. Games occur Friday or Saturday evenings during the school year in the school gymnasium. Adults only, no children, please.

Cub Scouts

The Cub Scout program is designed to positively influence character development and encourage spiritual growth. Cub Scouting is open to boys in grades one through five. Den meetings are held twice a month, either in a home or classroom for one hour. Pack meetings are in the school cafeteria on the last Thursday of the month. Adult stewards are needed with training provided.

Epiphany Catholic Home School (ECHO)

This support group is available to all Catholic families who choose to homeschool one or more of their children. ECHO supports the parents' role as the first and foremost educators of their children (CCC 2221; 2223) by providing social/educational/religious opportunities, including but not limited to: Masses, field trips, parent meetings, park play dates, gym, holiday parties and various potluck celebrations. Every family participates in family friendly volunteer jobs.

Epiphany Quilt Club

Twice a month the Quilt Club meets and spends the afternoon quilting. The group shares ideas and enjoys the fellowship of working together while creating beautiful hand-crafted quilt. Since the group started, twice a year they raffle off one of their homemade quilts with the proceeds raised being given to Epiphany.

Epiphany Reiser Foundation

The Epiphany-Reiser Foundation was formed to perpetuate the vision of our founding pastor, Father Bernard Reiser, and the founding members of Epiphany Parish. The Foundation benefits the areas of: Seniors, Outreach, Epiphany School and other ministries of Epiphany. The money is used within these areas for rent, tuition subsidy, funding of new initiatives for seniors, youth and/or children, and to perpetuate the generosity Epiphany has shown to the poor of our community, country and world. Gifts and bequests of cash, stocks, bonds, life insurance and other assets are gratefully accepted.

Girl Scouts

Girl Scouts is about helping girls grow strong. The mission is to inspire girls with the highest ideals of character, conduct, patriotism and service so that they may be happy and resourceful citizens. Girls can begin when they are in kindergarten. Adults are needed to serve as leaders and in other areas. Training is provided. Each troop schedules its own meeting times, dates, activities and service projects. However, annually all of the Epiphany troops come together for the weekend Camporee, Father/Daughter Dance and Bridging Ceremony.

Knights of Columbus

The Knights is a fraternal organization of practicing Catholic men 18 years of age or older. The Knights serve and support the church and the community through their many activities. These activities include brunches, blood drives, KC Companions, special Olympics and many more. Meetings are held the third Thursday of the month from 7:00 pm – 9:00 pm.

Knights of Columbus Ladies Auxiliary

Wives, widows, and other unmarried adult women assist the Knights in their spiritual, educational, charitable and social activities. The time commitment varies. Meetings are held the third Thursday of the month.

Light Weigh

The Light Weigh is a Catholic, 12-week long weight loss program. It incorporates Bible Study with a video series in which members learn to eat foods in moderation and only when you feel hunger. The meetings are weekly for 90 minutes. The Light Weigh gives its members specific materials, techniques, suggestions and a spiritual growth kit.

Little Flowers

Little Flowers' goal is to provide young Catholic girls, from age five years and up, with an opportunity to gather and learn about their Catholic heritage, faith and traditions. At small group meetings there is a discussion about a virtue, a saint and a bible verse. There are also large group activities such as playing bingo at the Pines, a fashion show and the annual Father/Daughter dance. Mothers play an active role in the Little Flowers group.

North Metro Job Networking Group

Are you unemployed or looking for a new career? This group meets every Tuesday evening from 6:30 p.m. - 8:30 p.m. at Epiphany in room 709. There are guest speakers from time to time and plenty of free resources for your use. Spend a positive evening networking with other professionals in all fields of work. Meetings are facilitated by group founder Richard White. We are open to the public.

Red Cross Blood Drive

The Knights of Columbus coordinates three Red Cross Blood Drives per year at Epiphany in July, October and February. Volunteers are needed to donate blood. The blood drives are scheduled for one day from 1:00 p.m. – 7:00 p.m.

Shakespeare and the Bible

Please join us as we explore the multiplicity of connections between Shakespeare's dramatic works and the Bible. We meet every other month on the first Thursday from 7:00 p.m. - 9:00 p.m. for a discussion regarding a selected Shakespeare play and all of the biblical and religious connections. This class is free and open to anyone with an interest. You can participate either in person or virtually. One or two weeks after each discussion a movie version of the play is shown.

Single Adults in Fellowship

The Single Adults in Fellowship gather together in prayer to walk with the Lord daily, to grow in faith with support and fellowship and to provide outreaching hands to embrace all who have chosen to participate. The group meets once every other month. The time and location varies according to the activity. The age requirement is 21.

Sobriety Sisters AA

Sobriety Sisters AA is an all women's Alcoholics Anonymous Group and a "Big Book" study group. Any woman who has a desire to stop drinking alcohol or stop using mood-altering drugs is invited to this group, which meets on Thursday evenings from 7:30 p.m. - 8:30 p.m.

Unemployment Support Group

The Unemployment Support Group provides a place for people who are unemployed and facing life challenges to receive support and information, and know they are not alone. The group gives them hope and strength to effectively continue their job search.

Women of Epiphany

The mission of the Women of Epiphany is to unite women of the parish, to promote spiritual and social interests and to assist in the charitable works of the parish. Meetings and planned activities occur on a regular basis throughout the year. The level of commitment can vary by the participant's availability. Also, there are groups of women who meet regularly in small groups called circles. These circles within Women of Epiphany include:

Women of Epiphany - Cause of Our Joy

Cause of Our Joy recites a decade of the rosary and provides a spiritual lesson at each meeting. They are dedicated to serving Epiphany Parish through the Bazaar, providing families with food and gifts at Christmas and playing bingo in the spring with the residents of Park River Nursing Home. Meetings are held on the second Wednesday of each month at 7:00 p.m. at various locations.

Women of Epiphany - Circle of Faith

Circle of Faith focuses on raising virtuous children and supporting each other. At each meeting the group has a short study on the Bible, prays a decade of the rosary or discusses one of the saints. The circle meets once per month with date and time determined each month. Young children are welcome dependent on the meeting location.

Women of Epiphany - Mystical Rose/Help of Christians

Mystical Rose and Help of Christians joined their circles to have spiritual, social and fun activities. They meet to share their Catholic faith, participate in the bazaar by running the bake sale, sponsoring a family at Christmas and serving at other Epiphany special events. The group meets the third Wednesday of each month at 7:00 p.m. in members' homes.

Women of Epiphany - Queen of Angels

Queen of Angels welcomes all Epiphany mothers with small children. We believe that motherhood is a vocation and a challenge. We meet with our children for social interaction on the second and fourth Tuesday of each month usually at 10:00 a.m. The group meets at Epiphany Church and at various locations.

Women of Epiphany - Saint Monica's

Saint Monica's is an informal group that meets at various times depending on availability of members. Their main purpose is spiritually based with a focus on prayers and discussions on pro-life issues

PASTORAL CARE and OUTREACH

Birthright

Birthright, a pro-life organization, provides caring support for women who are experiencing a crisis pregnancy. The group provides pregnancy tests, referrals for food, medical assistance and any other provisions that are needed. Birthright is located at 2393 Coon Rapids Boulevard. For services, call 763.757.0715. Adult stewards are needed and training is provided. The time commitment is four hours per month.

Communion Ministry to the Homebound

Eucharistic Ministers bring communion to the homebound, hospitals, nursing homes and Epiphany Assisted Living.

Divorced and Separated Support Group

This group promotes personal growth and proper attitude within self, allowing forgiveness and emotional healing both during and after divorce. Speakers from the parish are always welcomed and encouraged. The group meets every Tuesday 7:00 p.m. – 8:30 p.m. at Faith Lutheran Church.

Epiphany Assisted Living

Epiphany Assisted Living provides seniors a place for living in an apartment setting that offers assistance with various levels of care. Stewards can participate in a variety of activities, outings or tasks. All ages are encouraged, including families. Training will be provided.

Epiphany Caring for Life

Epiphany Caring for Life (ECL) offers personal support, resources and information to women experiencing unplanned or difficult pregnancies. The goal is to enable them to choose life. Angels Wings, a part of ECL, offers miscarriage support. Stewards staff the 24-hour hotline at 612.803.2225, provide companionship, staff the maternity closet and help organize/plan special events. Training is provided and the time commitment is flexible. All ages are welcome.

Epiphany Pines

Epiphany Pines is an independent senior apartment complex of 107 units. Service volunteers are needed for van drivers for outings, volunteer drivers for medical appointments, and activities or entertainment.

Epiphany...We Care

A ministry established to provide short-term urgent assistance for those parishioners that are in need. Being involved in this ministry may include transporting persons to medical and other appointments, running errands such as picking up groceries, getting prescriptions, providing domestic assistance in the area of simple household repairs or preparing/delivering a meal. This team of individuals brings their caring skills to assist in the emergency needs of Epiphany members.

Faith Community Nurse Program

The Faith Community Nurse program at Epiphany, in partnership with Mercy and Unity Hospitals, provides support to individuals and families in the area of health and healing. It combines faith and health care in an incredible way that benefits the parishioners/patients, faith communities and nurses. Health professionals are invited to be a part of Epiphany's health team ministry.

Family Promise

Family Promise, as part of the Interfaith Hospitality Network, provides a way for churches and synagogues to work together to help homeless families. Each congregation participating in the Network provides overnight lodging and meals for three to five families (up to 14 persons) for one week every two or three months on a rotating basis. Network guests stay in each congregation from 6:00 p.m. to 7:00 a.m. daily. Each morning guests are taken to the day center where they meet with the network director, care for pre-school children, make phone calls and seek housing and employment. Volunteers provide overall leadership to the Family Promise week at Epiphany through hospitality, meal preparation, set-up / clean up, overnight stay, entertainment, etc.

Family Table

We provide a free meal on the second Tuesday of each month for 250-350 people in need within our church and greater community. It is our goal to minister to others through this meal and through our fellowship. There is an opportunity for volunteers to help by greeting our guests, cooking the meal, serving the meal and dining with our guests. Individuals and families are welcome to help.

Food Shelf

Epiphany Food Shelf Ministry meets the needs of Epiphany parishioners and Anoka County Community Emergency Action Program (CEAP) referrals. Parishioners are encouraged to drop off food items, personal care and cleaning products at the food shelf cart near the gift center.

Funeral Food Ministry

Volunteers are needed to donate salads, cakes and rolls to serve funeral lunches. Phone callers are needed to contact families for the food. The time requirements will vary based on needs.

Funeral Luncheon Server

Members of this ministry serve and create a warm and loving lunch service at the time of a funeral. They are called on to set tables, make juice and coffee, serve food, clean up and return supplies to storage following luncheons. Adults are welcome. The time requirements will vary based on funeral times.

Holiday Basket Program

Epiphany Holiday Basket Program meets the needs of Epiphany parishioners and Anoka County CEAP referrals. Parishioners are encouraged to drop off items at the food shelf cart by the gift center. Please refer to church bulletin for needed items.

Meals on Wheels

The Meals on Wheels ministry delivers hot noon meals to the elderly and shut-ins of the community. The Church of the Epiphany drives twelve weeks a year. During those weeks 60-70 drivers are needed. Participants must have a valid driver's license. The time commitment is one to one and a half hours each time. The ministry is located at Camilla Rose Care Center.

New Parishioner Welcoming Team and Mentors

Welcoming Team

This team welcomes new parishioners into the parish and assigns a mentor to them. The team also hosts a monthly orientation and new member registration meeting at which time the new parishioner will formally become a member of the parish. The hosting of monthly meetings will be rotated among the members of the New Parishioner Welcoming Team.

Mentors

Mentors are responsible for making contact with the new parishioner over the phone, inviting them to meet at a Mass and make themselves available to answer any questions the new parishioner may have. Mentors will be called upon once every three to six months to mentor a new parishioner. Sufficient training will be provided.

North Metro Grief Coalition

The coalition is a partnership between Allina's Faith Community Nurse Program and about 16 area churches. Each church pitches in and provides facilitators for each six week grief support series and the churches take turns hosting the group. Epiphany has been a part of this for several years now. We use the "Growing Through Loss" format which entails meeting once per week for six weeks every fall and spring. Each meeting is complete in itself and begins with a speaker and is followed by hospitality and then small groups where participants are among others who share their type of loss whether it be death of a spouse, parent, child, infant, etc.

Nursing Home Mass Helper

During the week our Epiphany priests celebrate Mass at local nursing homes. Helpers are needed to make the liturgies run smoothly.

Prayer Shawl Ministry

If you knit, crochet or quilt, you can be part of the Prayer Shawl Ministry. Epiphany accepts prayer shawls that will be used to extend the love and prayers of people that care. They are given to people who need the healing power of prayer along with the awareness that others care for them. Our prayer shawls are given to all who are going through illness, homebound and people that are hospitalized.

Street People Ministry

Street People Ministry is a great opportunity to bring some happiness to the homeless at Sharing and Caring Hands by showing compassion, socializing and extending a helping hand to them. Over 350 street people are served a hot meal through this program. Food is prepared on the fourth Saturday of every month to be shared at Sharing and Caring Hands. Stewards are required to be at least 16 years old. The time commitment is two hours the fourth Saturday of every month. Participants meet at Epiphany and carpool to the location.

“Tell them to do good, to be rich in good works, to be generous, ready to share.”

~ 1 Timothy 6:17-19

Epiphany Information

The Church of the Epiphany

1900 111th Ave. NW
Coon Rapids, MN 55433
763.755.1020
www.epiphanymn.org

Epiphany Catholic School

11001 Hanson Blvd. NW
Coon Rapids, MN 55433
763.754.1750
www.epiphanychoolmn.org

Parish Office Hours:

Monday – Friday: 8:00 a.m. – 9:00 p.m.
Saturday: 8:00 a.m. – 5:00 p.m.
Sunday: Closed

Sunday Mass Schedule:

Saturday: 5:30 p.m.
Sunday: 7:15 a.m., 8:45 a.m., 10:30 a.m., 12:15 p.m., 5:30 p.m.

Monday – Friday Daily Mass:

6:30 a.m., 8:00 a.m., 6:00 p.m.

Saturday Daily Mass:

8:00 a.m.

Confession:

Immediately after the daily morning Masses
Before the weekday evening Mass (5:15 – 5:45 p.m.)
Saturdays: 9:00 – 10:00 a.m. and 4:00 – 5:00 p.m.