



Good people of Epiphany,

We're excited to present to you this updated copy of our parish ministry booklet. Of course we recognize that this booklet could never be complete. Who could possibly fit between the pages of one booklet the many ways that our parishioners manifest to others the love of Christ? Even so, it is inspiring just to flip through these pages – to see how vibrant and varied the love of Jesus is among us and to consider how many hearts and lives are being changed.

As with all that we do at Epiphany, we would hope that this booklet would help you to respond in a deeper way to our Lord's call to discipleship. Jesus comes to each of us as the bread of life but then he invites us to become bread for others. I was blessed to have received six years of seminary formation before I became a priest, with lots of intense studies and classroom instruction, but I've come to learn that nothing forms one's heart better than just getting out among God's people and letting grace take its course.

Take some time to pray and then consider how you might like to offer yourself to any of the over one-hundred ministries we have at Epiphany. Give of yourself generously. It's exciting. The Spirit of Jesus will fill you and guide you.

If you have any questions or ideas, contact our parish Office of Stewardship (763-862-4346). They've committed to be servants to you as you pledge to grow in service to others. Then, by the grace of God, may our parish family grow strong and may Epiphany become a place where countless more can be blessed.

Grateful that we have been called together in Christ,

Fr. Dennis Zehren, Pastor

Church of the Epiphany

Mission Statement:

We, the people of Epiphany Parish, have built a growing community on Coon Rapids farmland since our beginning in 1964. We are a parish with educational priorities. We are a caring people who minister by reaching out to our sisters and brothers, responding to their spiritual and physical needs. We will manifest Christ through fostering spiritual growth and unity, and witnessing our faith.

On June 16, 1964, 200 families became the first parishioners of The Church of the Epiphany. Bishop Leo Binz appointed Father Bernard Reiser as the first pastor, and the first Mass was celebrated on June 17, 1964. Sunday liturgies for the first few years were celebrated in the Coon Rapids Senior High School auditorium. The first church buildings were dedicated in October of 1967 and included the church sanctuary, which is now the school gymnasium, 12 classrooms, and a convent housing 20 sisters. The school was expanded in 1970, again in 1975, 1977, 1997, and 2002. The school educates over 750 students each year from kindergarten through 8th grade. Our Faith Formation classes provide instruction in the Catholic faith to over 1800 students.

Community building events have been a part of Epiphany for many years. Our annual festival, now called Springfest, began in October of 1964. In 1967 we took over a dining hall at the Minnesota State Fair. Epiphany has been serving great meals, building community, and reaching out to everyone at the Fair every year since, except in 1990 when the diner caught fire and burned to the ground.

The present church building was built in 1984 and is attached by a foyer to the school. In 1994 the Epiphany Pines, 107 senior apartments, was completed, providing independent living for seniors with easy indoor access to our church and other facilities through a connecting link. In 2001, the Epiphany Assisted Living was completed. The Assisted Living building contains 50 assisted living apartments and 14 memory care apartments. The Epiphany complex includes a cemetery, established in 1972, a perpetual adoration chapel, and a religious gift shop. The Fatima Shrine was dedicated in 2000 and includes Stations of the Cross, Rosary Beads and statues of Our Lady of Fatima surrounded by beautiful gardens for prayerful mediation and reflection. In 2003, Epiphany commissioned Sr. Clairvaux McFarland, OSF, to write an icon of the Epiphany. The icon is now located in the Icon Chapel in the main church.

Epiphany Parish has grown from a parish of 200 families to over 5,000 families. Each year we baptize approximately 350 babies, celebrate over 50 weddings, have over 200 First Communions, more than 150 Confirmations and over 100 funerals.

Epiphany reaches out beyond the Coon Rapids community, supporting Sts John & Elizabeth Church in Kentucky, missions in Africa, Guatemala, and South America. Through the generosity of our parishioners we have also built a women's shelter and school outside of Port-au-Prince, Haiti.

In March of 2001, Father Reiser retired as the pastor of Epiphany Church after 37 years. In July 2001 Father Patrick Kennedy became the second pastor of Epiphany. Father Kennedy called together the parish leadership and together the parish began a process of discernment to look back on where we have been, examine where we are now, and to look to the future of Epiphany. Out of this process came the Epiphany Pastoral Plan which provided four goals the parish will use to guide us over the next several years: Evangelization, Revitalize the Parish Leadership, Communication, and Stewardship.

For financial reasons a committee was formed to study stewardship and make recommendations. After some time the committee came to realize that stewardship was not just about money, but that it is a way of life in which people acknowledge that everything is a gift from God. From that realization, gratitude and sharing follow. The vision to become a total stewardship parish by 2006 became a goal. This would mean that all programs and ministries, including the school and faith formation programs, would be supported through the generosity of people's time, talent and treasure.

In July 2005 Father Kennedy was named pastor of Pax Christi Church Community, and Father Dennis Zehren, Associate Pastor, became pastor of Epiphany. Father Zehren continued the vision toward total stewardship, which became effective in July 2006.

In January 2007, because of short and long-term debt, it was decided after six months to return to the tuition model for the 2007-2008 school year for both the school and faith formation programs. The spirituality of stewardship as a way of life remains an emphasis.

May we continue to thank God for the many blessings He has bestowed on the Epiphany community over these years and may we always continue to manifest Christ in everything we do as a parish.

Stewardship: A Way of Life

The basic principle of stewardship is that everything we have: our life, our talents, our skills, our family - all is a gift from a loving God. What we possess is not really ours. We are God's stewards and caretakers of all that we have received. If we truly believe that God gives us all that we have, gratitude is our response. When we realize that God has provided for us and will continue to do so, we recognize that our real security lies in God. If we trust, God who has given us all, will take care of our future.

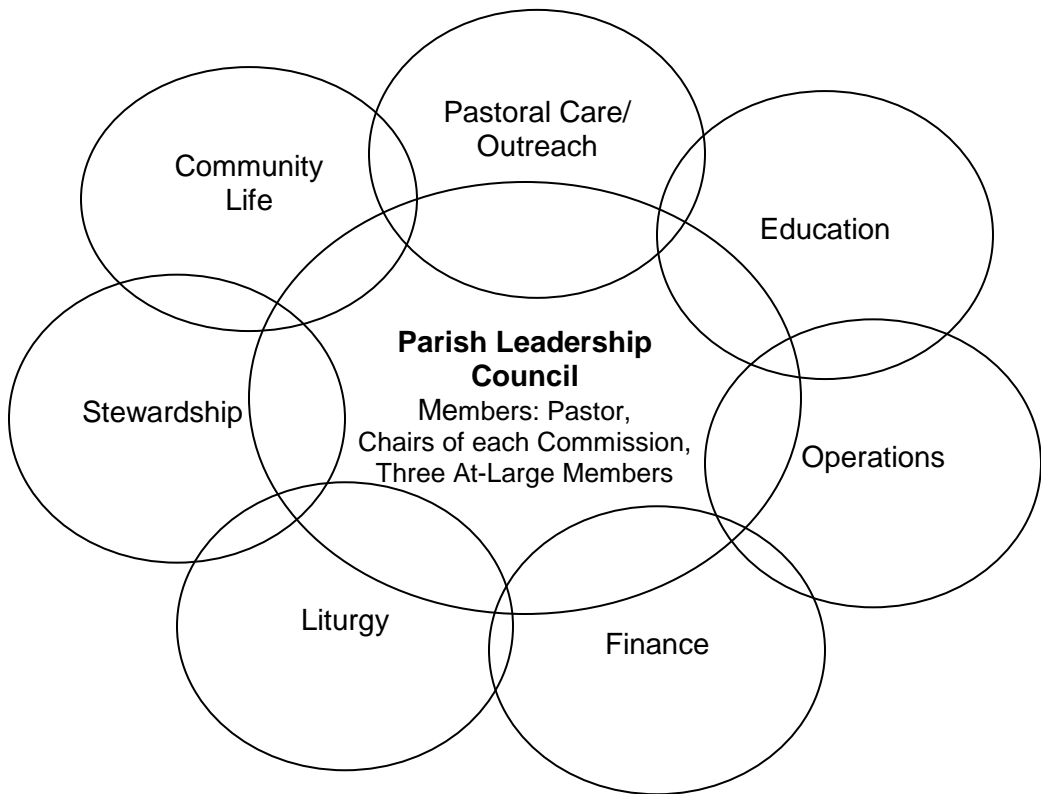
Beginning in conversion, change of mind and heart, this commitment is expressed not in a single action, nor even in a number of actions over a period of time, but in an entire way of life. It means committing one's very self to God. Jesus' call is urgent. He does not tell people to follow him at some time in the future but here and now – at this moment, in these circumstances. There can be no delay.

Stewardship: A Disciples' Response

Risk Management

All adult volunteers in the St. Paul & Minneapolis Archdiocese who regularly work or have contact with minor and vulnerable adults in a supervisory, leadership, chaperoning, care-giving, teaching or similar relationship need to have a Minnesota Background check and Virtus, or "Protecting God's children & Vulnerable Adults" training. These are also required of leaders of the State Fair Diner, Marathon & Springfest. Please visit the website, www.virtus.org, to register and view upcoming sessions. If you are not sure if you fall under these categories, please call 763-862-4347.

Parish Leadership Council



The Parish Council is founded in prayer with the utilization of our talents to advise the Pastor and evaluate, enhance, support, engage, and fulfill the Pastoral Plan and “Manifest Christ to all.” The Parish Council consists of three at large members, seven commission chairs, and the Pastor. The two trustees and the administrator are ex-officio members. The seven commissions are Community Life, Pastoral Care/Outreach, Education, Finance, Liturgy, Operations, and Stewardship. The council meets the second Tuesday of each month from 8:30 p.m. - 9:30 p.m. Members generally serve a three-year term. Each spring new members are chosen through prayer and discernment.

Alphabetical Listing by Organization

Adult Faith Formation Task Force.....	15
Altar Servers.....	22
Apostolate For Family Consecration.....	15
Baptism Preparation Program.....	15
Bike Blessing & Ride.....	9
Boy Scouts.....	9
Building Maintenance.....	27
Cana Dinner.....	9
Celebration Ringers.....	24
Chapel Cleaning.....	27
Charismatic Prayer Group.....	25
Children’s Choir.....	24
Children’s Liturgy of the Word.....	22
Church Cleaning.....	27
Collection Counters.....	20
Confirmation.....	16
Courage and Encourage.....	16
Cub Scouts.....	9
Elementary Faith Formation.....	16
Environment.....	22
Environment – Vigil Light Cleaners.....	22
Epiphany ~ Reiser Foundation.....	21
Epiphany Assisted Living.....	20
Epiphany Catholic Home School (ECHO).....	16
Epiphany Catholic School.....	17
Epiphany Extended Day Program.....	17
Epiphany Extra.....	9
Epiphany Pines.....	20
Epiphany Prayer Chain.....	25
Epiphany School Readiness Preschool Program.....	17
Epiphany Seniors 55+.....	10
Epiphany...We Care.....	28
Evangelization Faith Sharing Groups.....	32
Extraordinary Ministers of the Eucharist.....	22
Faith Community Nurse Program.....	28
First Reconciliation and First Eucharist Program.....	17
Food Shelf.....	28
Frassati Society.....	10

Friday Couples Volleyball.....	10
Funeral Food Ministry.....	29
Funeral Service Ministry.....	29
Gathering Space Information Desk.....	32
Gift Center.....	21
Girl Scouts.....	10
Heaven Sent.....	24
Hospitality Food Service.....	11
Instrumentalists/Cantors.....	24
Knights of Columbus.....	11
Knights of Columbus Companions.....	11
Knights of Columbus Ladies Auxiliary.....	11
Lectors.....	23
Legion of Mary.....	25
Lending Library.....	17
Life Teen Worship Band.....	24
Little Flowers.....	11
Marriage Mentors.....	18
Meals on Wheels.....	29
Men of Epiphany.....	11
Middle School Youth Ministry and Faith Formation.....	18
Natural Family Planning Educators.....	18
New Parishioner Mentors.....	12
New Parishioner Welcoming Team.....	12
North Metro Job Network.....	29
Office of Sacristan.....	23
Outreach Fund Committee.....	29
Parish Bulletin.....	12
Parish Choir.....	24
Parish Mailings.....	12
Parish Office Reception.....	32
Pastoral Ministry.....	30
Pastoral Ministry – Communion Ministry.....	30
Pastoral Ministry – Divorced and Separated.....	30
Pastoral Ministry – Domestic & Emotional Abuse.....	30
Pastoral Ministry – Grief & Loss.....	30
Perpetual Eucharistic Adoration.....	25
Red Cross Blood Drive.....	12
Respect Life/Social Justice.....	30
Respect Life/Social Justice – Birthright.....	30

Respect Life/Social Justice – Caring for Life.....	31
Respect Life/Social Justice – Just Faith.....	31
Resurrection Schola.....	25
Rite of Christian Initiation for Adults.....	18
Rite of Christian Initiation for Children.....	18
Rosary – Mother Mary Rosary Group.....	26
Rosary – Rosary Leaders.....	26
\$crip.....	21
Senior High Youth Ministry and Faith Formation.....	19
Single Adults in Fellowship.....	13
Sobriety Sisters AA.....	31
Soundboard Operators.....	27
Springfest.....	13
State Fair Diner.....	13
Stewardship Committees.....	32
Street People Ministry.....	31
Sunday Nursery.....	19
Sunday School Early Childhood Education.....	19
Thanksgiving/Christmas Baskets.....	31
Third Order Franciscans.....	26
Ushers.....	23
Vacation Bible School.....	19
Van Drivers.....	13
Vocation Committee.....	19
Women of Epiphany.....	14
Women of Epiphany – Cause of Our Joy.....	14
Women of Epiphany – Circle of Faith.....	14
Women of Epiphany – Help of Christians.....	14
Women of Epiphany – Mystical Rose.....	14
Women of Epiphany – Queen of Angels.....	14
Youth Ministry Advisory Task Force.....	20

COMMUNITY LIFE COMMISSION

Mission Statement:

To encourage greater participation and fellowship through social activities and effective communication.

Bike Blessing & Ride

The bike blessing and ride is a yearly spring event to promote Christian fellowship within the motorcycling community, to obtain a blessing for a safe riding year, and to raise funds to be distributed to worthy causes. Stewards are needed for registration, collecting door prizes, and hospitality.

Boy Scouts

Boy Scout Troop 524 is open to 11-17 year old boys. The troop is a boy-led organization, with adult leaders who assist. Boy Scouting will teach young men to be the masters of their own destiny, give them the self-respect and confidence to make their own decisions, and become young men of integrity. The troop meets on Monday evenings in the Epiphany School cafeteria.

Cana Dinner Committee

The Cana Dinner celebration is an annual event in February at Epiphany that celebrates married couples with a para liturgy, dinner, social, and speaker. The committee of married couples meets several times during the year. They plan the event, sell tickets after Masses, and host the event, which is held at the church.

Cub Scouts

The Cub Scout program is designed to positively influence character development and encourage spiritual growth. Cub Scouting is open to boys in grades one through five. Den meetings are held twice a month, either in a home or classroom, for one hour. Pack meetings are in the school cafeteria on the last Thursday of the month. Adult stewards are needed with training provided.

Epiphany Extra

The mission of the Epiphany Extra Newsletter is to provide a vehicle to bond parishioners and support the mission of Epiphany by providing common information. The newsletter is published every two months and is mailed to every registered household.

Epiphany Seniors 55+

The Epiphany Seniors 55+ is a group of parishioners 55 & over, who meet on a regular basis and through various activities to help foster and build a Catholic community of senior men and women within the Church of Epiphany. Epiphany Seniors 55+ meet on the third Tuesday of each month from 6:30 p.m. - 8:30 p.m. These meetings consist of a business report by the steering committee, a presentation by a speaker or entertainment, and a light meal or dessert. Additional activities and outings include a quilt group and sponsoring a child in Mexico and more.

Senior Club

A group of the Epiphany Seniors meet at the Epiphany Pines the second and fourth Monday of the month at 1:00 p.m. This group known as the Senior Club provides a prayer chain, sponsors a child, participates in the Fall Bazaar, plays cards, and has several special celebrations.

Frassati Society

Inspired by the life of Blessed Pier Giorgio Frassati, the Epiphany Frassati Society seeks to unite the Catholic young adult community. Through social activities, outdoor recreation, spiritual growth opportunities, and Christian service, everyone is strengthened and encouraged to live out their faith in everyday matters. This group welcomes all single and married, priests and religious, between the ages of 18-35. For more information about it, the patron, and the calendar of events, please go to the website, www.EpiphanyFrassati.com

Friday Couples Volleyball

Couples interested in having a little exercise and fun while playing the game of volleyball composes this group. Games occur Friday evenings during the school year in the school gymnasium. Adult couples only, no children, please.

Girl Scouts

Girl Scouts is about helping girls grow strong. The mission is to inspire girls with the highest ideals of character, conduct, patriotism, and service that they may be happy and resourceful citizens. Girls can begin when they are in kindergarten. Adults are needed to serve as leaders and other areas of the grade level. Training is provided. Each troop schedules its own meeting times, dates, activities, and service projects. However, annually all of the Epiphany troops come together for the weekend Camporee, Father/Daughter Dance and Bridging Ceremony.

Hospitality Food Service

The Hospitality Food Service stewards assist with the set up and the serving of food and beverages for various parish functions. Volunteers are needed for serving during Mass times and special events.

Knights of Columbus

The Knights is a nonprofit, adult, men's organization formed to provide a system of insurance to care for widows and orphans of members, to aid the cause of religion, to perform charitable, educational, and patriotic work for others and to defend the sanctity of life. The time commitment varies. Meetings are held the third Thursday of the month.

Knights of Columbus Companions

KC Companions are Knights or Auxiliary members who commit to regular visits to someone needing companionship. Companions are expected to visit a friend in their place of residence at least twice a month. These Companions meet three times per year to share, learn, pray, and support the ministry. Guests are welcome. These meetings are held at the church. The age requirement is 18 and training is provided.

Knights of Columbus Ladies Auxiliary

Wives, widows, and other unmarried adult women assist the Knights in their spiritual, educational, charitable, and social activities. The time commitment varies. Meetings are held the third Thursday of the month.

Little Flowers

Little Flowers' goal is to provide young Catholic girls, from age five years and up, with an opportunity to gather and learn about their Catholic heritage, faith and traditions. At small group meetings there is a discussion about a virtue, a saint and a bible verse. There are also large group activities such as playing bingo at the Pines, a fashion show and the annual Father/Daughter dance. Mothers play an active role in the Little Flowers group.

Men of Epiphany

The purpose of Men of Epiphany is to equip and encourage men for more effective service within their families. Participants in this group must be adult males. The time commitment is one and a half hour every week. The group meets in the Hearth Room at 6:30 a.m. on Saturdays. For more information, or to see our weekly study, visit us on the web at www.MenofEpiphany.org.

New Parishioner Welcoming Team and Mentors

Welcoming Team

This team welcomes new parishioners into the parish and assigns a mentor to them. The team also hosts a monthly orientation and new member registration meeting at which time the new parishioner will formally become a member of the parish. The hosting of monthly meetings will be rotated among the members of the New Parishioner Welcoming Team. Members of the seven commissions, parish staff and clergy will also attend the monthly gatherings.

Mentors

Mentors are responsible for making contact with the new parishioner over the phone, inviting them to meet at a Mass and make themselves available to answer any questions the new parishioner may have. Mentors will be called upon once every three to six months to mentor a new parishioner. Sufficient training will be provided.

Parish Bulletin

Epiphany publishes a bulletin each week, September through May, and every other week in June, July, and August. The bulletin is mailed to all registered households on the first week of each month, and other weekly bulletins are handed out after weekend Masses. The bulletin contains information about parish, school, and youth events, as well as special liturgical celebrations, a listing of weekly Mass intentions, a calendar of events, the pastor's column, the parish financial information, etc. The weekly bulletin is also posted on the Epiphany website. Stewards are needed once a month to assist with the mailing process.

Parish Mailings

Periodically Epiphany has the need to do a major mailing to all registered members of the parish. These include mailings prior to Springfest and stewardship renewal times. Assistance with these mailing projects is welcome.

Red Cross Blood Drive

The Knights of Columbus organize three Red Cross Blood Drives per year at Epiphany. Donors must be at least 17 years old, in good health, and weigh at least 110 pounds. Also, opportunities are available to serve as a greeter, phone caller or cantina server (juice and cookies). Stewards must be at least 18 years old; the time commitment is four to six hours per blood drive.

Single Adults in Fellowship

The Single Adults in Fellowship gather together in prayer to walk with the Lord daily, to grow in faith with support and fellowship, and to provide outreaching hands to embrace all who have chosen to participate. The group meets once every other month. The time and location varies according to the activity. The age requirement is 21.

Springfest

Springfest, Epiphany's annual three-day celebration, is held on the third weekend in May. Chairs and co-chairs over the age of 18 are needed to help coordinate a wide variety of areas. The time commitment varies depending upon the area. Also, throughout Springfest weekend about 1,000 stewards are needed to work shifts that are approximately four hours in length. The age requirement is 12 with an adult, and varies for each activity. Please note: Shift sign-up occurs after Masses the three weekends prior to Springfest.

State Fair Diner

The Epiphany Diner is open daily during the annual Minnesota State Fair, late August through Labor Day. The diner provides a wonderful opportunity for community with other parishioners and promotes Epiphany within the state. Over 1,500 stewards are used during the diner each year. Anyone sixth grade or older is welcome to participate. Please note: Shift sign-up occurs after Masses in August.

Van Drivers

Van drivers provide transportation for senior citizens who would like to attend the 8:45 a.m. Mass on Sundays. Epiphany Parish furnishes the van. Driving is done on a rotation basis, which currently averages every other month with about six to nine people to transport. Training is provided.

"No one shall appear before the Lord empty-handed, but each of you with as much as he can give, in proportion to the blessings which the Lord, God has bestowed on you."

~ Deuteronomy 16:10, 16-17

Women of Epiphany

The mission of the Women of Epiphany is to unite women of the parish, to promote spiritual and social interests, and to assist in the charitable works of the parish. Meetings occur monthly. The level of commitment can vary by the participant's availability. Also, there are groups of women who meet regularly in small groups called circles. These circles within Women of Epiphany include Cause of Our Joy, Circle of Faith, Help of Christians, Mystical Rose, and Queen of Angels:

Cause of Our Joy

Cause of Our Joy recites a decade of the rosary and provides a spiritual lesson at each meeting. They are dedicated to serving Epiphany Parish through the Bazaar, providing families with food and gifts at Christmas, and playing bingo in the spring with the residents of Park River Nursing Home. Meetings are held on the second Wednesday of each month at 7:00 p.m. at various locations.

Circle of Faith

Circle of Faith focuses on raising virtuous children and supporting each other. At each meeting, the group has a short study on the Bible, prays a decade of the rosary, or discusses one of the saints. The circle meets the third Tuesday of every month at 9:30 a.m. with their children at members' homes.

Help of Christians

Help of Christians sponsor spiritual, social, and fun activities. We discuss the needs of the parish and lead the fall raffle and spring retreat. Help of Christians alternate our meeting times.

Mystical Rose

Mystical Rose shares spiritual growth, develops stewardship opportunities, and serves Epiphany parish. We participate in the Christmas Bazaar, sponsor a family at Christmas, donate a basket to Springfest, and serve at special events. The group meets the third Wednesday of every month at 7:00 p.m. in members' homes.

Queen of Angels

Queen of Angels welcomes all Epiphany mothers with small children. We believe that motherhood is a vocation and a challenge. We meet with our children for social interaction on the second and fourth Tuesday of each month. The group meets at Epiphany Church and at various locations.

EDUCATION COMMISSION

Mission Statement:

To encourage and facilitate lifelong education in faith for the whole person.

Adult Faith Formation Task Force

Adult Faith Formation is the main category for adult religious education programs in the parish. This task force functions as a subcommittee of the Education Commission. This team is a working group that assists in planning, implementing, and welcoming adults in a variety of programs. Anyone over 18 years old is welcome to serve on this committee for a minimum of one year.

Apostolate for Family Consecration

The Apostolate for Family Consecration is a Vatican approved apostolate that helps families evangelize families. This apostolate has produced over 1,500 video programs featuring the best teachers in the Catholic Church. Some of these videos are the Be Not Afraid Family Hour which systematically teaches the Catholic faith. The Apostolate for Family Consecration also produces a catechetical program for grades one through high school.

Baptism Preparation Program

Parents who have an infant or a child under the age of seven who has not been baptized are asked to prepare themselves for this sacrament by participating in the Baptism Preparation Program of the parish. Parents, and optionally Godparents, are asked to attend either before or after the child's birth. Meetings are held at Epiphany in the Hearth Room the first Saturday of the month 10:30 a.m. - 12:00 p.m. After attending the class, scheduling for the baptism can occur. Baptisms take place each Sunday immediately following the 12:15 p.m. Mass. Stewards are needed to serve as mentors and to greet new people. Training will be provided as needed. Parents who have attended the session within the past three years do not need to attend the session. Contact the parish office for an information sheet.

Confirmation

The Confirmation program is the Sacramental process to prepare youth for the Sacrament of Confirmation. Candidates are in 10th grade and enrolled in the regular Faith Formation Program, a formal Home School Program, or their Catholic High School Religion Program. In addition, there are candidate/sponsor/parent evenings, a retreat weekend and other responsibilities. The Sacrament of Confirmation takes place at the Cathedral of St. Paul in the spring.

Courage and Encourage

Courage, an apostolate of the Roman Catholic Church, ministers to those with same-sex attractions and their loved ones. In Courage, participants will get to know local men and women who share their concerns and will meet with an area priest. With the priest, participants will receive spiritual direction and will have the opportunity for sacraments.

Encourage is a confidential support group to help families and friends to reach out to their loved ones who experience same-sex attractions. The goal of Encourage is to aid the spiritual growth of parents, relatives, and friends who wish to assist the loved ones who have the same-sex attraction. This group meets the third Wednesday of the month at 7:00 p.m.

Elementary Faith Formation

Through the Elementary Faith Formation program, children in first through fifth grade, are presented a systematic and comprehensive presentation of the Catholic faith. Classes are held on Tuesday or Wednesday evenings from late September through late April. Stewards are needed as catechists, office helpers, nursery help, hall monitors, and music leaders. Training is provided.

Epiphany Catholic Home School (ECHO)

The Catholic Home School group is available to all families who choose to home school their children. The mission is to foster the spiritual, academic, and social growth of Catholic home school families. The organization sponsors activities throughout the year. Optional parent meetings are held the third Wednesday of the month. The time commitment is flexible. Training is provided as necessary.

Epiphany Catholic School

The Epiphany parish community sponsors Epiphany Catholic School. The mission is to assist all school parents in providing for the spiritual and educational growth of their children. Adult stewards are needed to help in the classrooms, lunchroom, media center, athletics, office, and playground during the school year. Training is provided. Parents of school students are encouraged to get involved in the Parent/Teacher Organization (PTO), the Education Commission, and the Epiphany Athletic Association (EAA).

Epiphany Extended Day Program

The Extended Day Program is an educational and recreational program that provides year-round care to kindergarten through sixth grade students Monday thru Friday from 2:15 p.m. - 6:00 p.m. on school days and 6:00 a.m. – 6:00 p.m. on release days and throughout the summer. This program provides a variety of planned and meaningful activities designed to complement school day experiences and stimulate the desire to learn.

Epiphany School Readiness Preschool Program

The School Readiness Preschool Program seeks to provide four and five year old children with a foundation for future education and an enthusiastic desire to learn. Our program's primary skill focus is threefold: academic skills, self-help skills, and social skills. Sessions are available on a M/W/F or T/Th basis, from 9:00 a.m. – 1:00 p.m., with lunch provided.

First Reconciliation and First Eucharist Program

The First Reconciliation and First Eucharist program provides support for parents who are preparing their second grade child to receive the sacraments of First Reconciliation and First Eucharist. The program is offered in conjunction with the Faith Formation classes, school religion classes, and home-school education. It includes parent/child meetings and retreats. Adults and teenagers are needed to assist with office help, greeting participants, and organizing the parent/child learning centers.

Lending Library

The Epiphany Lending Library is a ministry formed to help evangelize Christian faith through media channels, influence spiritual and moral growth, and provide knowledge of our Catholic faith. People of all ages are needed to help in the Lending Library. The library is open after weekday and weekend Masses. The time commitment is one half hour to four hours a month. Occasionally, there is a need for evening work on an on call basis.

Marriage Mentors

Marriage Mentor couples assist engaged couples in preparing for the sacrament of marriage. The mentor couples must be married at least three years. Training is provided. Meetings with the engaged couple take place in the home of the mentoring couple.

Middle School Youth Ministry and Faith Formation

The Junior High Youth Ministry and Faith Formation programs help our sixth through eighth grade youth encounter Christ and develop their relationship with Him while learning more about their Catholic faith. Leaders high school age or older are needed on Sunday or Wednesday evenings to assist in the weekly program. The time commitment is two to six hours a week. The initial weekend training is in early September, and ongoing training is the third Monday of every month from 7:00 p.m. -9:00 p.m. Occasionally additional adult chaperones are needed for one-time events.

Natural Family Planning Educators

Natural Family Planning is a healthy, loving way for married couples to plan pregnancy. It is 99% effective in avoiding pregnancy and can offer enormous assistance to couples struggling with infertility. Unlike artificial contraception, the Catholic Church endorses it as a morally acceptable means of family planning. Classes are periodically taught at Epiphany, and stewards are needed to teach classes. Training is provided.

Rite of Christian Initiation for Adults (RCIA)

RCIA is the process by which adult men and women are initiated and welcomed into the Catholic faith through the sacraments of Baptism, Eucharist, and/or Confirmation. This process includes instruction, scripture reflection, faith sharing, prayer, liturgical rites, and community building times. Any adult wishing to be baptized, receive their First Eucharist, and/or be confirmed is welcome to consider this program. Stewards are needed to fill the roles of sponsors, and team members. The meetings are held on Wednesday evenings from September through April 6:45 p.m. - 8:15 p.m. On-going training is provided.

Rite of Christian Initiation for Children (RCIC)

This parish program is for youth older than second grade who have not been baptized, received First Reconciliation, and/or First Eucharist. The program meets on Wednesday evenings, 6:45 p.m. - 8:00 p.m., from late September through spring. Training is provided for catechists/teachers.

Senior High Youth Ministry and Faith Formation

Senior High Youth Ministry and Faith Formation helps our ninth through twelfth grade youth to encounter Christ and develop their relationship with Him while learning more about their faith. Stewards are needed on Sunday or Wednesday evenings to assist in the weekly program. Leaders must be out of high school three years or more. The time commitment is two to six hours a week. Training is provided. The initial weekend training is in early September, and ongoing training is the third Monday of every month from 7:00 p.m. - 9:00 p.m. Occasionally, additional adult chaperones are needed for one-time events.

Sunday Nursery

The nursery is a fun and safe place for small children who are walking, up to age three to stay during 8:45 a.m. and 10:30 a.m. Masses. Registration is required. Parents of the children using the nursery are scheduled approximately every six weeks to be an adult supervisor. Youth are also welcome (fifth grade or older). An adult must be present for the nursery to be open.

Sunday School/Early Childhood Education

Epiphany's Sunday School/Early Childhood Education program provides religious education for three year olds through first graders on Sunday mornings during the 8:45 a.m. and 10:30 a.m. Masses from September through May. Stewards 13 years or older are needed to volunteer in the program. Training is provided.

Vacation Bible School

Vacation Bible School is a children's faith formation ministry, which strives to bring God's presence, love, and word to children of all ages in an exciting and fun atmosphere. This is a weeklong summer program that requires a large number of stewards. Each individual's time commitment can vary according to one's availability. Adults and youth at least 12 years of age are needed to plan and assist with Vacation Bible School as group leaders, music leaders, clerical support, first aiders, kitchen workers, artists, and class helpers. Training is provided.

Vocation Committee

The Vocation Committee sponsors programs to encourage men and women of Epiphany to serve the Catholic Church as priests, brothers, or sisters. Also, funds are raised to help support their formation. Stewards are needed to serve on the committee. The group meets approximately eight times a year at Epiphany.

Youth Ministry Advisory Task Force

The Youth Ministry Advisory Task Force is a working subcommittee of the Education Commission comprised of six to eight adults. The purpose is to assist in planning youth ministry activities and providing support where needed.

FINANCE COMMISSION

Mission Statement:

The Finance Commission works with the parish staff and advises the pastor with regard to the assets and finances of The Church of the Epiphany in order to ensure that the spiritual, educational, and social needs of our community are met. The Commission will work with the church community to obtain and distribute the resources necessary to support the parish, students, faculty, and vision of The Church of the Epiphany within the guidelines of the Archdiocese.

Collection Counters

Teams of parishioners count the gifts of treasure given at various times. Duties include separating envelopes and loose cash, checking for amount accuracy on envelopes, cross-checking batches and money, and counting and verifying the cash and checks for the bank deposits. Participants must be at least 18 years old, and training is provided. Background checks are required. There is generally a three to four hour commitment every six weeks.

Epiphany Assisted Living

Epiphany Assisted Living provides Seniors a place for living in an apartment setting that offers assistance with various levels of care. Stewards can participate in a variety of activities, outings, or tasks. All ages are encouraged, including families. Training will be provided.

Epiphany Pines

Epiphany Pines is an independent senior apartment complex of 107 units. Service volunteers are needed for van drivers for outings, volunteer drivers for medical appointments, and activities or entertainment.

Epiphany~Reiser Foundation

The Epiphany~Reiser Foundation was formed to perpetuate the vision of our founding Pastor, Father Bernard Reiser, and the founding members of Epiphany Parish. The Foundation benefits the areas of: Seniors, Outreach, Epiphany School and other ministries of Epiphany. The money is used within these areas for rent, tuition subsidy, funding of new initiatives for seniors, youth and/or children, and to perpetuate the generosity Epiphany has shown to the poor of our community, country and world. Gifts and bequests of cash, stocks, bonds, life insurance and other assets are gratefully accepted.

Gift Center

The Epiphany Gift Center makes available books, bibles, music and gifts for our parishioners to purchase below suggested retail. All of the profits are contributed to the parish. Any adults and confirmation students are welcome to work at the gift center, and training is provided. The Gift Center is open during Masses on weekends and a couple of hours each day during the week. The time commitment of stewards working the register and selling the merchandise is two hours a month.

\$CRIP

\$crip , instituted at Epiphany in 1997, is a way for parishioners to financially assist the parish by purchasing discounted gift certificates to local grocery, gas, restaurants, and retail outlets. The parish receives 2% - 19% of all \$crip sold. Profits allow the parish to fund extra projects. Adults are needed to work the table during weekend Masses. The time commitment is approximately three hours every eight weeks and training is provided.

*“Tell them to do good, to be rich in good works, to be generous, ready to share.”
~ 1 Timothy 6:17-19*

LITURGY COMMISSION

Mission Statement:

The Liturgy Commission will work to manifest a liturgical environment that invites an understanding of the celebration of the Eucharist through full, conscious, and active participation in the Mass.

Liturgical Ministries

Altar Servers

Altar servers assist the priest during the Mass. Fifth graders or anyone over ten years of age may apply for this ministry. Adults are needed to help with training, scheduling reminders, and other events connected with this ministry.

Children's Liturgy of the Word

The Children's Liturgy of the Word is a celebration of God's Word for young children ages six to nine during Sunday 8:45 a.m. and 10:30 a.m. Masses. Children are invited to an alternative space to reflect on God's Word. Leaders must be 16 years of age or older, and the time commitment is a half hour each time. The rotation varies according to the number of leaders.

Environment

The Environment Committee's mission is to create a welcoming environment that announces the Liturgical season and draws the community into the celebration of the Liturgy. As a committee we are responsible for decorating the church, sanctuary and gathering space throughout the liturgical year. Members are needed to plan, set-up and maintain the environment throughout the year. Time commitment can range from thirty minutes to eight hours per month.

Vigil Light Cleaners

Vigil Light Cleaners are responsible for cleaning the inside of the vigil lights and putting in new candles in the church and chapel. Training is provided. The time commitment is approximately twenty minutes, one to two times a month.

Extraordinary Ministers of the Eucharistic

Extraordinary Ministers distribute the Body and Blood of Christ at all weekend Masses and on Holy Days of Obligation. The Eucharistic Minister chooses a specific Mass time and serves on a five-week rotation. Training is provided. Attendance at one annual meeting is required.

Lectors

Lectors proclaim the Word of God and the Prayer of the Faithful during all weekend and Holy Day Masses. We are assigned on a five-week rotation. We proclaim at different Mass times within our schedule, as part of a two person team. Ongoing training and support is provided during monthly Lector workshops. The workshops are used to help us grow in the spirituality and rituals of our calling.

Office of Sacristan

The Office of Sacristan is a ministry of the Church by which a sacristan uses his/her time and talent to serve the priest before and after one of the daily or weekend Masses. The sacristan performs all preparations for the Mass by working with the altar servers, lectors, ushers, extraordinary ministers of the Eucharist and by performing the duties within the sacristy. The sacristan should arrive one half hour before Mass and plan to stay a short time after Mass. The age requirement for a sacristan is 16 years old and confirmed. Training is provided and the rotation is once a week.

Ushers

Ushers are greeters of hospitality who meet and greet people as they enter the church for Mass or worship. The ushers also gather the Sunday offerings collections and hand out parish bulletins. Ushers are required to wear proper attire. Participants must be confirmed, and training is provided.

“Just so, your light must shine before others that they may see your good deeds and glorify your heavenly Father.”

~ Matthew 5:13-16

Music Ministries

Celebration Ringers

The Celebration Ringers, Epiphany's bell choir, provides occasional music at liturgies. Members need not have experience playing bells, but should be able to read music.

Children's Choir

Children in grades one to five are invited to join the Epiphany Children's Choir. The choir will sing at 8:45 a.m. Mass periodically during the year.

Heaven Sent

Heaven Sent is a contemporary music group that provides uplifting and energetic worship using a blend of traditional and current-style music to lead the congregation in song and praise. We sing at the 5:30 p.m. Mass on the first and second Saturday each month. We also sing the third Sunday of the month at 8:45 a.m. Mass. Rehearsals are Thursdays at 7:30 p.m.

Instrumentalists/Cantors

Members of Epiphany parish are invited to offer their musical gifts on an occasional or regular basis. Instrumentalists are encouraged to provide special music periodically, and there is an on-going need for cantors to lead congregational singing at Masses. Stewards may sign up for a Sunday, season, or year.

Life Teen Worship Band

The Life Teen musicians lead the congregation in worship at the Sunday 5:30 p.m. Mass and participate in various youth events throughout the year. The band plays all styles of worship music with the sole intent of lifting up the name of Jesus Christ and bringing people, especially the youth of our parish, closer to Him. Participants must be adults and have been out of the youth program one full year, and complete a simple interview and audition process. The group meets Thursday evenings for rehearsal.

Parish Choir

The Parish Choir leads congregational song and provides special music at the 10:30 a.m. Sunday Mass from September through May. Choir members should be at least 16 years of age. Rehearsals are Wednesday evenings from 6:45 p.m. - 8:45 p.m. The Choir meets on Sunday mornings at 9:45 a.m. to prepare for Mass.

Resurrection Schola

The Resurrection Schola is the choir that sings for funeral liturgies at Epiphany. This ministry offers musical and liturgical hospitality to those grieving their loss. There is no age requirement. Members are called as funerals occur and meet one half-hour prior to the funeral. Members are not expected to sing for every funeral due to their unexpected nature.

Devotional Ministries

Charismatic Prayer Group

The Charismatic Prayer Group are adults who gather to sing praise to God, listen to Him, share scripture, learn about God and His Church, and pray together. The group meets every Tuesday evening at 8:00 p.m.

Epiphany Prayer Chain

The Epiphany Prayer Chain is a volunteer prayer line based on requests and is sponsored by Epiphany Caring for Life. Praying involves personal prayer, going to Mass, adoration, etc. A list of requests is located in the chapel so others may also pray. The time commitment is individual and all are welcome to participate.

Legion of Mary

The Legion of Mary is a worldwide organization of Catholic men and women who offer their services to the priest performing spiritual works and any type of social services and Catholic action. Members perform any apostolic work that is needed. The work is done under the direction of the spiritual director.

Perpetual Eucharistic Adoration

Adoration is a quiet time spent in prayer before Jesus present in the Eucharist. Parishioners are invited to sign up for one hour each week, and a substitute program is available when the scheduled weekly commitment cannot be met. The Chapel is open throughout the day and night, and visitors of all ages are always welcome.

Rosary Groups

Mother Mary Rosary Group

The Mother Mary Rosary Group gathers Monday evenings for the 7:00 p.m. Mass and prays the Chaplet of Divine Mercy and Rosary following the liturgy. Everyone is welcome.

Rosary Leaders

Rosary Leaders lead the rosary one half hour before Masses on Saturday and Sunday. Participants may select the time they would like to lead. Substitutes are also needed. Children are welcome. Training is provided, and the time commitment is approximately once per month.

Third Order Franciscans

The Third Order Franciscans are a Franciscan fraternity of lay religious. They pledge themselves to live the gospel in the manner of St. Francis of Assisi. Each gathering consists of community prayer, adoration, and fellowship. When participants complete three years of formation, they will be professed and become full-pledged members of the Franciscan secular order. The group gathers every fourth Thursday of the month at 6:30 p.m.

“And keep in mind the words of the Lord Jesus who himself said, “It is more blessed to give than to receive.”

~ Acts 20:35

OPERATIONS COMMISSION

Mission Statement:

To promote the mission of The Church of the Epiphany parish by continuing the development, operation, and the maintenance of our facilities. This will foster a safe and healthy environment in which the needs of all programs can be fulfilled.

Building Maintenance

Epiphany needs stewards to help with maintaining the facilities and grounds of the parish. Stewards are needed to paint and clean the inside of the building. Stewards are needed to help with planting flowers, weeding, and deadheading flowers and other outside work. Additional professional trades people are needed to assist in various jobs such as plumbing, carpentry, electrical, etc. Stewards must be at least 16 years old and the time commitment varies depending upon the project.

Chapel Cleaning

The chapel is cleaned every week on Sunday mornings. Teenagers and adults are welcome to participate. Training is provided, and the time commitment is approximately five times a year.

Church Cleaning

The church is cleaned either on Mondays at 9:00 a.m. or on Tuesdays at 8:00 p.m. Teenagers and adults are needed to help with the cleaning. Based on the current rotation, each steward is needed five times a year. Training will be provided.

Soundboard Operators

Soundboard operators set up microphones and verify operation of the Church's sound system for all weekend Masses. The operators adjust sound levels during the Mass as needed. Some experience with sound equipment is recommended, and people experienced with PowerPoint. Training will be provided, and operators must be at least 18 years old to participate. The time commitment is one Mass per week, and the participants must be very reliable. Substitutes are also needed, but must fill in often enough to stay up to date with equipment and processes.

PASTORAL CARE/OUTREACH COMMISSION

Mission Statement:

The Pastoral Care and Outreach Commission (PC&OC) affirms the God-given dignity of all persons by facilitating the Church of Epiphany's charity and justice ministries.

The commission nurtures and advocates parish activities that focus on providing physical, emotional and spiritual support to others, especially during times of uncertainty, difficulty or pain.

We strive for the continued development of a compassionate faith community by creating awareness and opportunities in our parish to serve. We recognize that God is revealed through all persons; therefore, we encourage participation in service to the disadvantaged and vulnerable of the parish and community.

Epiphany...We Care

A ministry established to provide short term urgent assistance for those parishioners that are in need. Being involved in this ministry may include transporting persons to medical and other appointments, running errands such as picking up groceries, getting prescriptions, or providing domestic assistance in the area of simple household repairs, or preparing/delivering a meal. This team of individuals brings their caring skills to assist in the emergency needs of Epiphany members.

Faith Community Nurse Program

The Faith Community Nurse program at Epiphany, in partnership with Mercy and Unity Hospitals, provides support to individuals and families in the area of health and healing. It combines faith and health care in an incredible way that benefits the (patients) parishioners, faith communities and nurses. Health professionals are invited to be a part of Epiphany's health team ministry.

Food Shelf

Epiphany Food Shelf Ministry meets the needs of Epiphany parishioners and Anoka County Community Emergency Action Program (CEAP) referrals. Parishioners are encouraged to drop off food items at the food shelf cart near the gift center.

Funeral Food Ministry

Volunteers are needed to donate salads, cakes, and rolls to serve funeral lunches. Phone callers are needed to contact families for the food. The time requirements will vary based on needs.

Funeral Service Ministry

Members of this ministry serve and create a warm and loving lunch service at the time of a funeral. They are called on to set tables, make juice and coffee, serve food, clean up, and return supplies to storage following luncheons. Adults are welcome. The time requirements will vary based on funeral times.

Meals on Wheels

The Meals on Wheels ministry delivers hot noon meals to the elderly and shut-ins of the community. The Church of the Epiphany drives twelve weeks a year. During those weeks 60-70 drivers are needed. Participants must have a valid driver's license. The time commitment is one to one and a half hours each time. The ministry is located at Camilla Rose Care Center.

North Metro Job Network

Are you unemployed or looking for a new job? You can help the unemployed by becoming a corporate contact person who is willing to forward openings to the group from your company. Your contact information is protected and remains confidential at all times. The North Metro Job Networking group meets each Thursday evening from 6:30 p.m. – 8:30 p.m. to assist individuals in their job search.

Outreach Fund Committee

The Outreach Fund Committee's objective is to recognize that Epiphany is part of the global Church and many needs extend beyond our parish boundaries. Disbursements are given in accordance with the committee's purpose statement and the Epiphany mission statement. The Committee meets periodically. Participants must be 18 years old to serve on the committee.

Pastoral Ministry

Pastoral Ministry is committed to many forms of human services at Epiphany. It upholds people in mutual support and respect while sharing concerns and allowing personal growth. The following areas are supported through the Pastoral Ministry program:

Communion Ministry

Eucharistic Ministers bring communion to the homebound, hospitals, nursing homes, and Epiphany Assisted Living.

Divorced and Separated Support Group

This group promotes personal growth and proper attitude within self, allowing forgiveness and emotional healing both during and after divorce. Speakers from the parish are always welcomed and encouraged. The group meets every Tuesday 7:00 p.m. – 8:30 p.m. at Faith Lutheran Church.

Domestic and Emotional Abuse

Epiphany has a direct Domestic Abuse Hotline: 763-862-4365. This number is published in the bulletin weekly and messages are checked each day. There are individuals trained to listen to people who have been abused and want to change their lives in this area.

Grief & Loss

This group seeks to support each other in their grief after the loss of a loved one. People may come as many times as they wish. The support group meets every Tuesday 1:00 p.m. - 2:00 p.m. at Epiphany Pines. Epiphany also belongs to North Suburban Grief Support Coalition, which meets periodically at different Churches in the area.

Respect Life/Social Justice

The Respect Life/Social Justice Committee shares a foundational belief in the dignity of the human person and the sanctity of all life. Using Scripture, we educate our parish in an understanding of justice and involvement in life issues. As we grow in the understanding of the gospel's social mission, we reach out to the community at large and serve as a catalyst for positive social change. All ages are welcome. The time commitment varies.

Birthright

Birthright, a pro-life organization, provides caring support for women who are experiencing a crisis pregnancy. The group provides pregnancy tests, referrals for food, medical assistance, and any other provisions that are needed. Birthright is located at 2393 Coon Rapids Boulevard. For Services, call 763-757-0715. Adult stewards are needed, and training is provided. The time commitment is four hours per month.

Caring for Life

Epiphany Caring for Life (ECL) offers personal support, resources and information to women experiencing unplanned or difficult pregnancies. The goal is to enable them to choose life. Angels Wings, a part of ECL, offers miscarriage support. Stewards staff the 24-hour hotline 612-803-2225, provide companionship, staff the maternity closet, and help organize/plan special events. Training is provided, and the time commitment is flexible. All ages are welcome.

JustFaith

JustFaith strives to provide faith formation processes and resources that emphasize the Gospel message of peace and justice, Catholic social teaching and the intersection of spirituality and action. The aim of JustFaith is to enable people of faith to develop a passion for justice and to express this passion in concrete acts of social ministry. Weekly meetings occur throughout the school year.

Sobriety Sisters AA

Sobriety Sisters AA is an all women's Alcoholics Anonymous Group and a "Big Book" study group. Any woman who has a desire to stop drinking alcohol or stop using mood-altering drugs is invited to this group, which meets on Thursday evenings from 7:30 p.m. - 8:30 p.m.

Street People Ministry

Street People Ministry is a great opportunity to bring some happiness to the homeless at Sharing and Caring Hands by showing compassion, socializing, and extending a helping hand to them. Over 350 street people are served a hot meal through this program. Food is prepared on the fourth Saturday of every month to be shared at Sharing and Caring Hands. Stewards are required to be at least 16 years old. The time commitment is two hours the fourth Saturday of every month. Participants meet at Epiphany and carpool to the location.

Thanksgiving/Christmas Baskets

Epiphany Christmas/Thanksgiving Basket Program meets the holiday needs of Epiphany parishioners and Anoka County CEAP referrals. Parishioners are encouraged to drop off food items at the food shelf cart by the gift center.

STEWARDSHIP COMMISSION

Mission Statement:

We glorify God by assuring that Epiphany parish is a community of faithful stewards, acknowledging the gifts God has given including time, talent, and treasure. We promote gracious and generous participation of the entire community.

Evangelization Faith Sharing Groups

Faith Sharing Groups are groups of eight to twelve parishioners or families that provide a forum of prayer, faith sharing, reflection on evangelization, and being committed to a life of stewardship. The groups are in response to the Archdiocesan Evangelization Initiatives. Meetings are held in homes during Lent. Materials and facilitator training are provided.

Gathering Space Information Desk

The church gathering space is an area where visitors often enter seeking information about our parish and programs. This ministry provides the opportunity to welcome the many who pass through Epiphany doors. Scripture invites us to "Welcome one another as Christ has welcomed you." (Romans 15:7). Many volunteers are needed to help staff this information and welcoming desk.

Parish Office Reception

Adults are needed on evenings and weekends in the parish office. Participants should enjoy answering phones and greeting people. Training is provided, and the time commitment is negotiable.

Stewardship Committees

The Stewardship Committees are subcommittees of the Stewardship Commission and provide assistance to the pastor and parish leadership in the overall design, education, and implementation of stewardship of life. This includes the planning of the annual stewardship weekends. The groups are responsible for the development of the shared ministry booklet, which is used to solicit ministers for various activities and ministries within Epiphany. The time commitment varies according to the current projects.